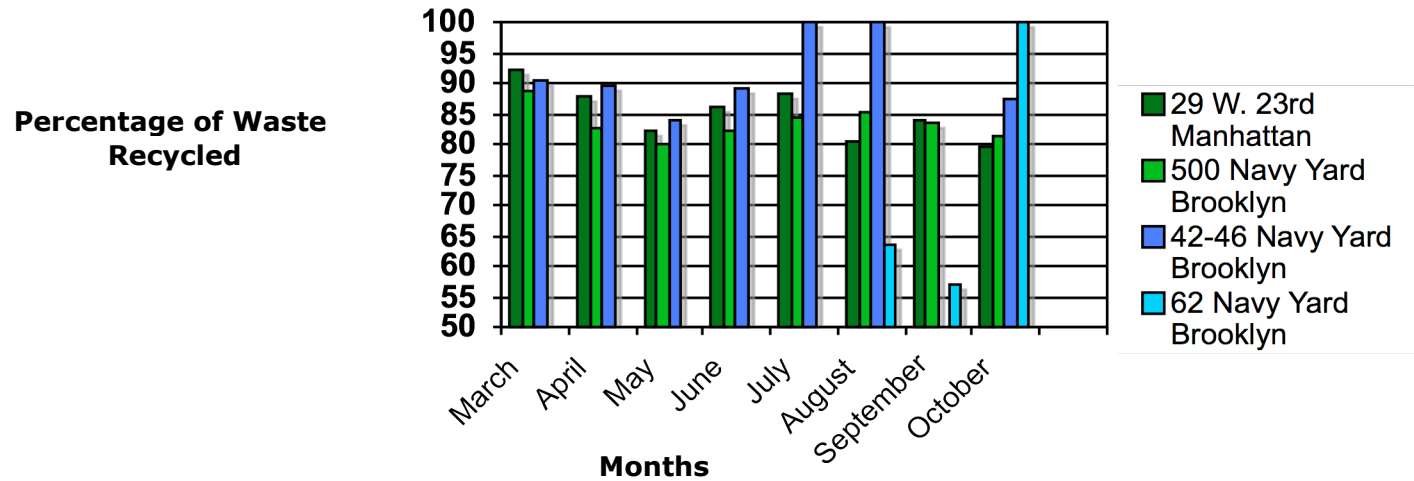


Year To Date Totals % Duggal Visual Solutions' Facilities



Waste Description	29 w. 23rd St. Manhattan	500 Brooklyn Navy Yard	42- 46 Brooklyn Navy Yard	62 Brooklyn Navy Yard
Wood	21.02%	35.74%	0%	17.15%
Metal	1.45%	3.17%	0%	1.89%
Cardboard	21.85%	9.37%	17.02%	15.12%
Concrete/ Brick	0%	2.26%	0%	0.00%
Glass	0%	1.05%	0%	0.00%
Dirt	0%	0.36%	0%	0.00%
Paper	33.21%	21.79%	69.93%	27.33%
Plastic	6.46%	9.21%	3.47%	12.06%
Residual	16.00%	17.04%	9.59%	26.45%
Total	100%	100%	100%	100.00%

Average Recycled %

84.00%

82.96%

90.41%

73.55%